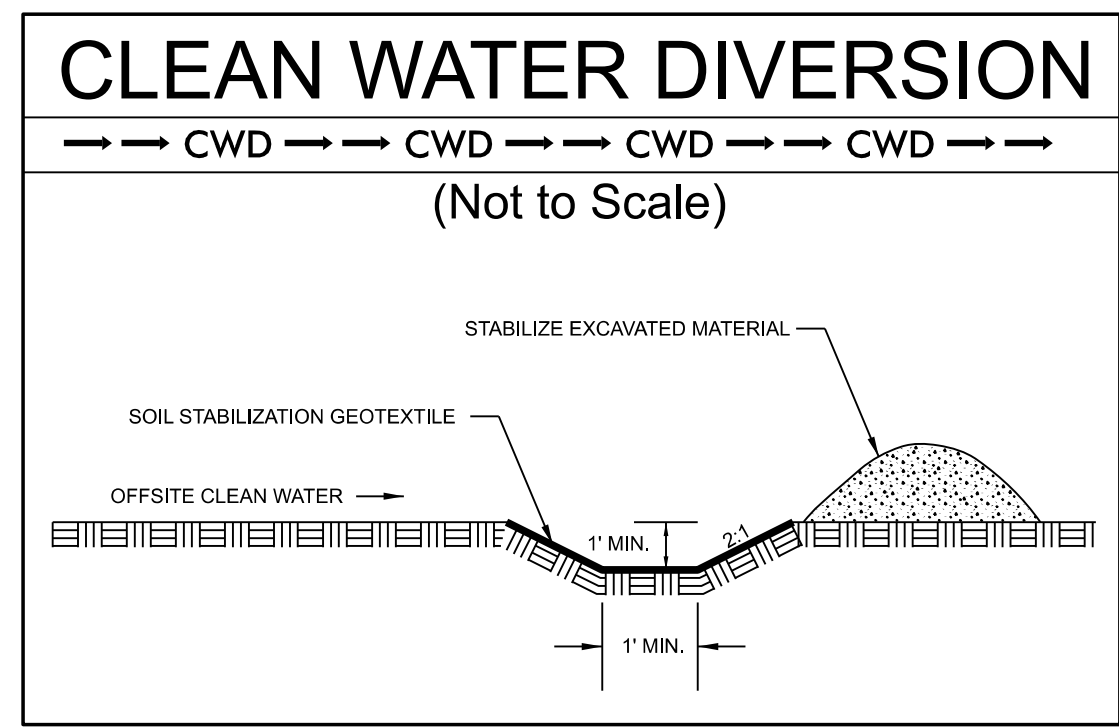


<b>CUR DATA -L-</b> Plc 11+20.89 $\Delta c = 07^{\circ}53'14.2''$ (RT) D = $04^{\circ}57'53.9''$ Lc = 158.86 Tc = 79.55 R = 1,154 SE = EXIST.	<b>CUR DATA -L-</b> Plc 13+58.90 $\Delta c = 04^{\circ}25'53.5''$ (RT) D = $03^{\circ}46'54.8''$ Lc = 117.18 Tc = 58.62 R = 1,515 SE = EXIST.	<b>CUR DATA -L-</b> Plc 14+94.81 $\Delta c = 19^{\circ}38'35.5''$ (RT) D = $16^{\circ}22'12.8''$ Lc = 119.99 Tc = 60.59 R = 350 SE = 0.040 R.O. = 60' DS = 30 MPH	<b>CUR DATA -L-</b> Plc 17+31.98 $\Delta c = 24^{\circ}08'25.0''$ (RT) D = $22^{\circ}38'47.6''$ Lc = 106.60 Tc = 54.10 R = 253 SE = 0.040 R.O. = 60' DS = 30 MPH	<b>CUR DATA -L-</b> Plc 19+24.54 $\Delta c = 38^{\circ}33'20.0''$ (LT) D = $27^{\circ}01'34.7''$ Lc = 142.66 Tc = 74.15 R = 212 SE = EXIST.	<b>CUR DATA -L-</b> Plc 20+35.60 $\Delta c = 06^{\circ}25'00.0''$ (LT) D = $07^{\circ}32'55.9''$ Lc = 85.00 Tc = 42.55 R = 759 SE = EXIST.	<b>CUR DATA -L-</b> Plc 22+06.98 $\Delta c = 14^{\circ}31'25.8''$ (LT) D = $09^{\circ}10'02.4''$ Lc = 158.43 Tc = 79.64 R = 625 SE = EXIST.
--	--	--	--	--	---	--

<b>CUR DATA -DW1-</b> Plc 10+38.86 $\Delta c = 74^{\circ}35'54.9''$ (LT) D = $143^{\circ}14'22.0''$ Lc = 52.08 Tc = 30.47 R = 40 SE = NC	<b>CUR DATA -DW1-</b> Plc 11+34.28 $\Delta c = 62^{\circ}22'30.7''$ (RT) D = $143^{\circ}14'22.0''$ Lc = 43.55 Tc = 24.21 R = 40 SE = NC
---	---



HB-0030

004Final

NORTH CAROLINA  
DEPARTMENT OF TRANSPORTATION  
MACON COUNTY

ROADWAY DESIGN UNIT  
ROADWAY DESIGN  
ENGINEER

HYDRAULICS  
ENGINEER

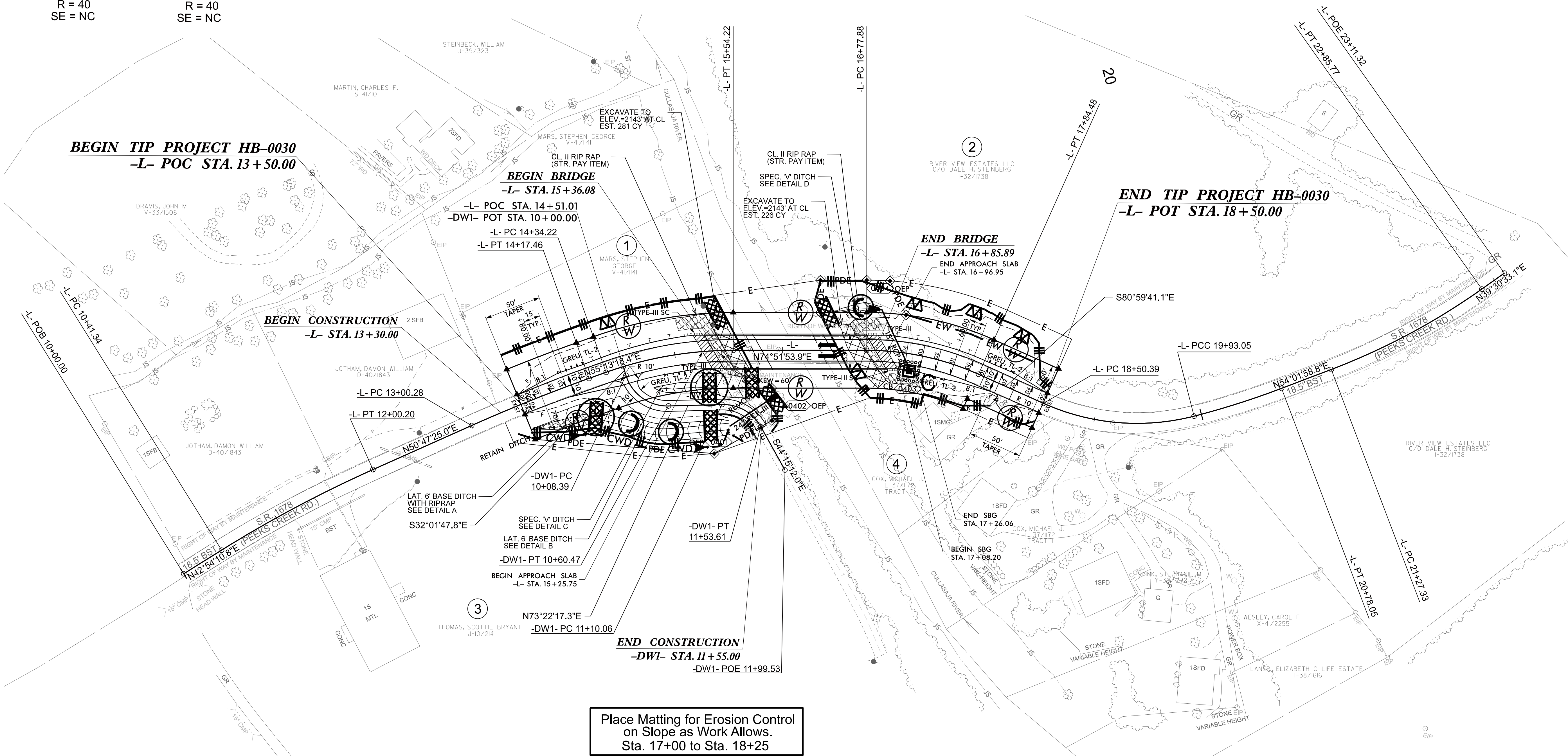
INCOMPLETE PLANS  
DO NOT USE FOR R/W ACQUISITION

**PRELIMINARY PLANS**  
DO NOT USE FOR CONSTRUCTION

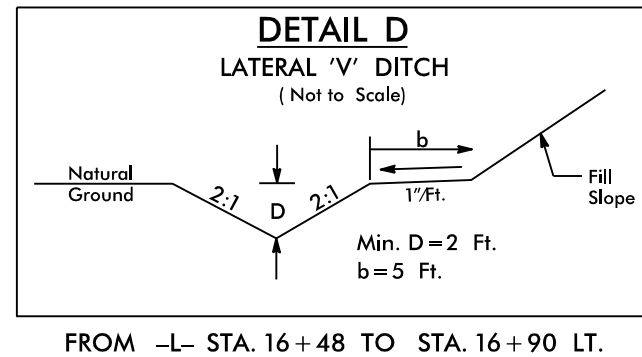
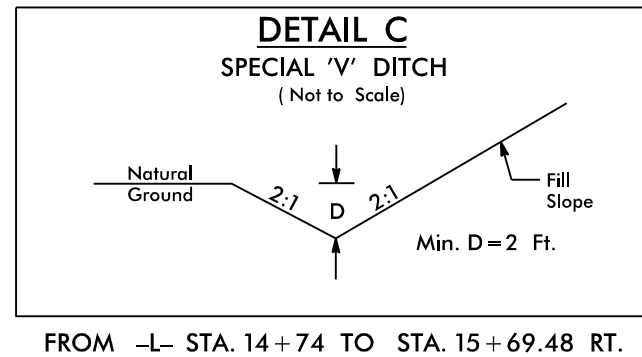
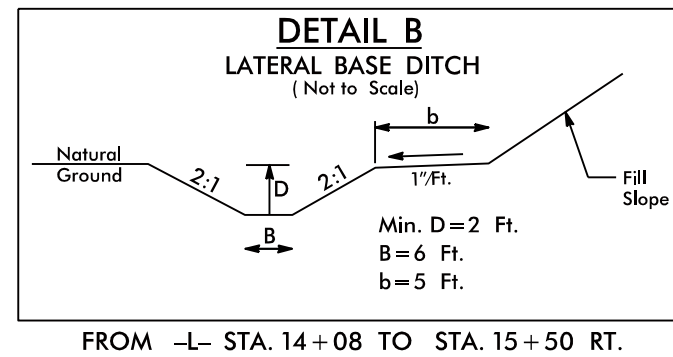
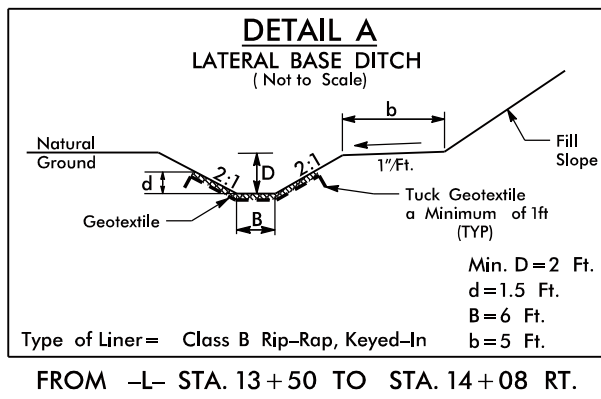
DOCUMENT NOT CONSIDERED FINAL  
UNLESS ALL SIGNATURES COMPLETED

PREPARED BY  
**DRMP**  
DRMP, INC.  
8000 REGENCY PARKWAY, SUITE 110  
CARY, NC 27518  
NC LICENSE NO. F-1524 (919) 650-1038

REVISIONS



Place Matting for Erosion Control  
on Slope as Work Allows.  
Sta. 17+00 to Sta. 18+25



FOR -L- PROFILE SEE SHEET 5  
FOR -DW1- PROFILE SEE SHEET 5